

The Erie Basin Renewable Energy Loan Program has been established to help agricultural and rural businesses!

FARMS ARE ELIGIBLE!

This program allows qualified businesses the opportunity to borrow up to \$25,000 to upgrade their businesses to become more energy efficient.

If you are interested in making improvements to reduce your energy consumption through renewable energy sources, this low-interest loan program is for you!

An equal opportunity provider and employer



Contact Information and Hours of Operation

Greg Small
Coordinator

180 Milan Ave, Suite 9
Norwalk, OH 44857

Monday-Friday
8:00 a.m. - 4:00 p.m.
Closed on Saturday and Sunday

Phone:
(419) 681-6013

Fax:
(419) 663-8405



eriebasinrcd@yahoo.com
eriebasinrcd.org
[facebook.com/pages/
Erie-Basin-RCD](https://facebook.com/pages/Erie-Basin-RCD)



THE
RENEWABLE ENERGY
LOAN PROGRAM



Ashland, Crawford, Erie,
Huron, Ottawa, Richland,
Sandusky, Seneca, Wood
and Wyandot Counties

Purpose and Requirements

The purpose of the Erie Basin Renewable Energy Loan Program is to increase energy efficiency in the 10 counties served by Erie Basin. By assisting rural businesses, including agricultural operations, the businesses and community will benefit.

Eligible Borrowers

- Corporations
- Partnerships
- Sole Proprietorships

Use of Funds

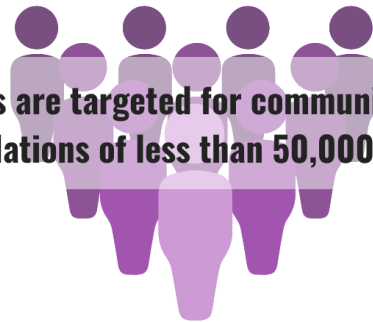
- Geothermal
- Solar PV
- Solar Thermal
- Wind Turbines
- Equipment and other approved improvements

THE TERMS



Length of a loan 7 to 10 years.

The interest rates are 6%, but they will ultimately be determined by the Erie Basin RC&D RLF Committee.



Funds are targeted for communities with populations of less than 50,000 people.

Personal guarantee is required.



A maximum of \$25,000 will be lent per loan.

This program will be available as long as funding permits.

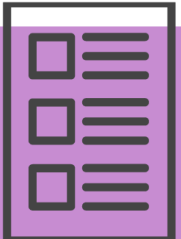
The Process



Applications require a brief history of the company, a project description including all elements of the project, an estimated timeframe

for completion, and cost estimates that are supported by quotes.

Also required are tax returns for the past two years, profit and loss statements, and a current balance sheet.



If the building is rented or leased, permission from the owner is required.

Applications are found on our website and can be delivered by mail, in person, or through e-mail.

Go to eriebasinrcd.org, click on Projects, then Revolving Loan Fund, and scroll down for the RLF Application.



Erie Basin RC&D
180 Milan Ave, Suite 9
Norwalk, OH 44857